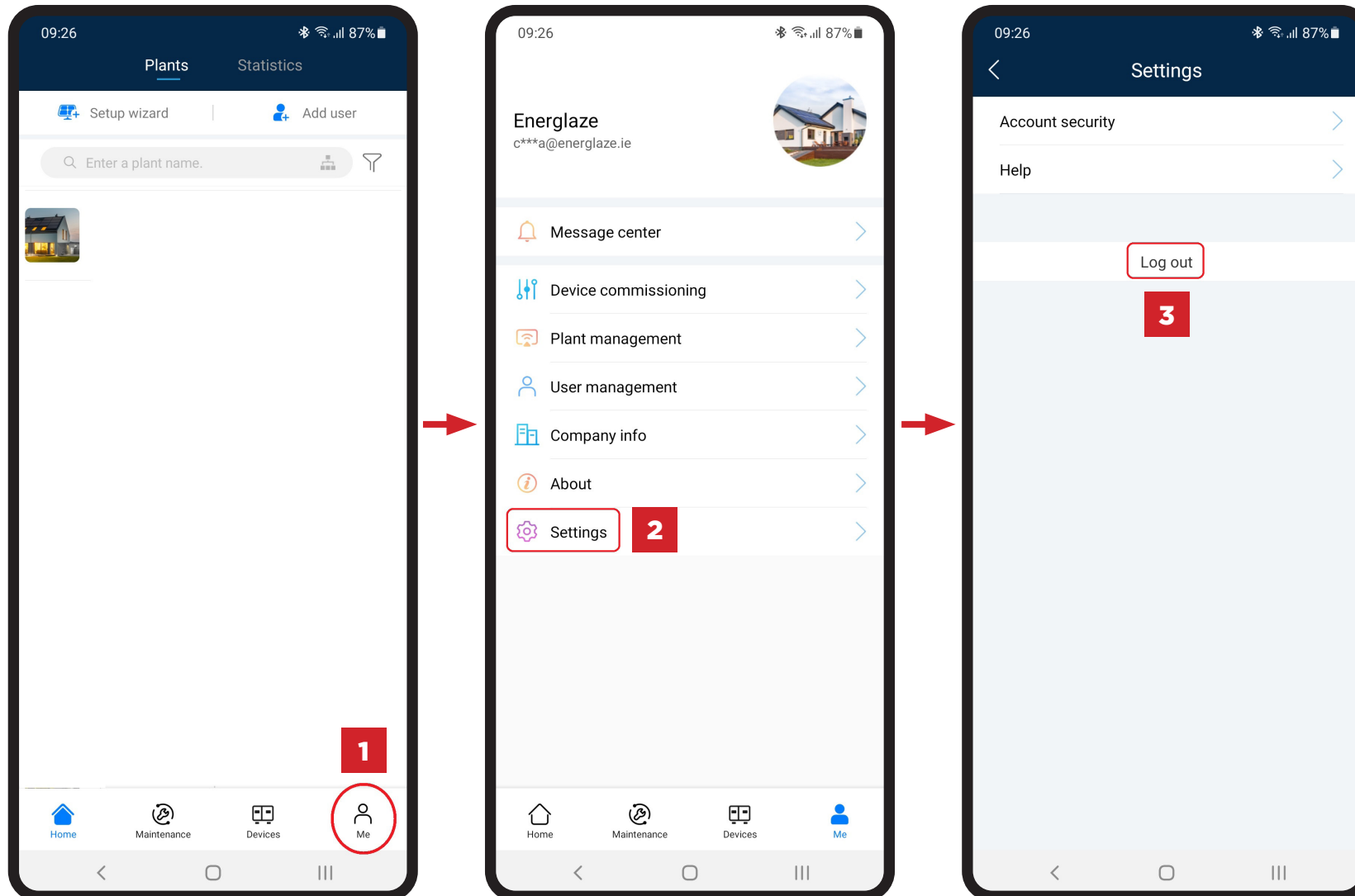


# Setting up a new modem for a Huawei Sun2000 Inverter.



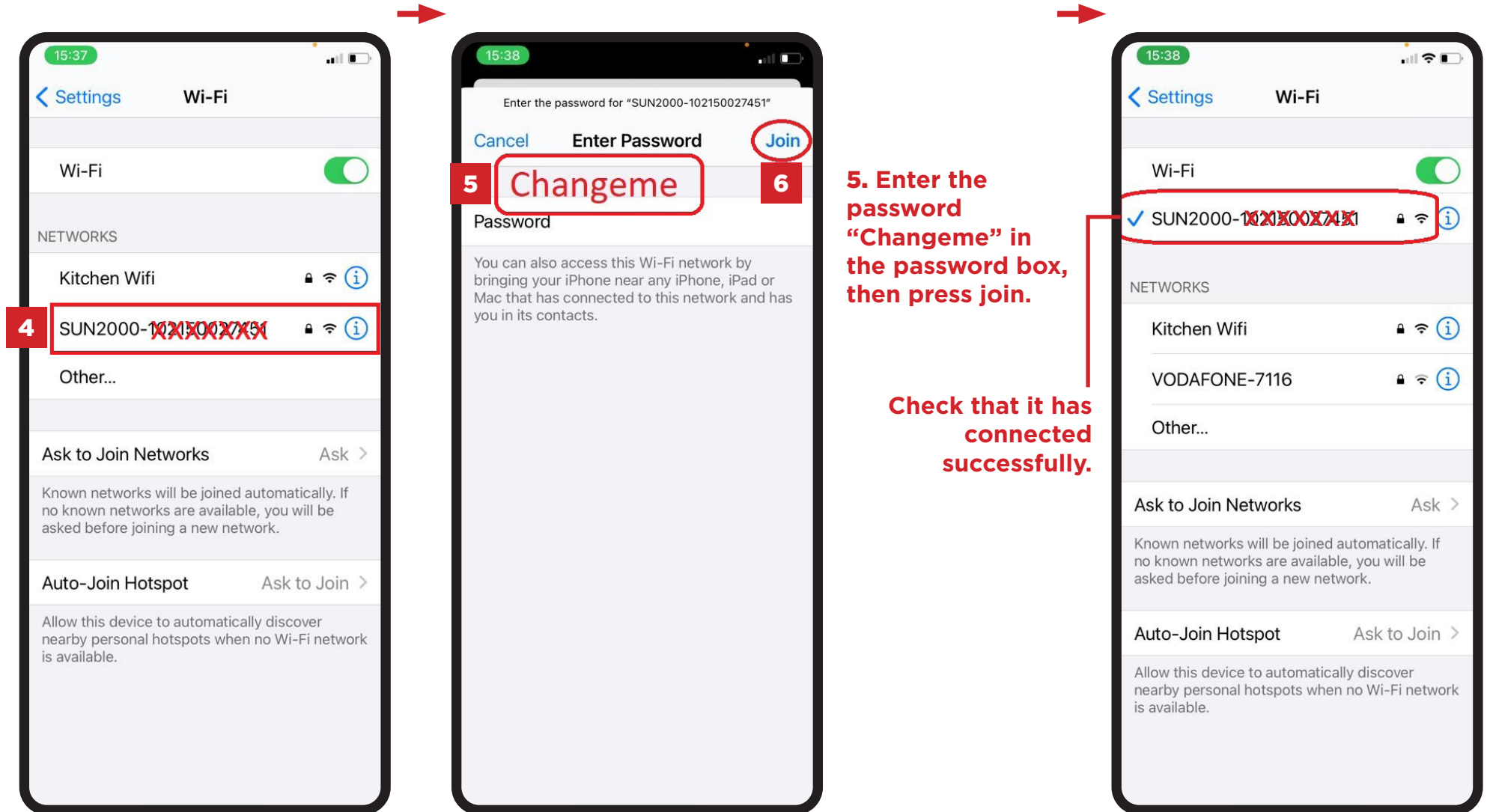
# Step 1

## Log out of FusionSolar



# Step 2

## Connect to the Inverter



**4** Select the network **SUN2000-102150027451**.

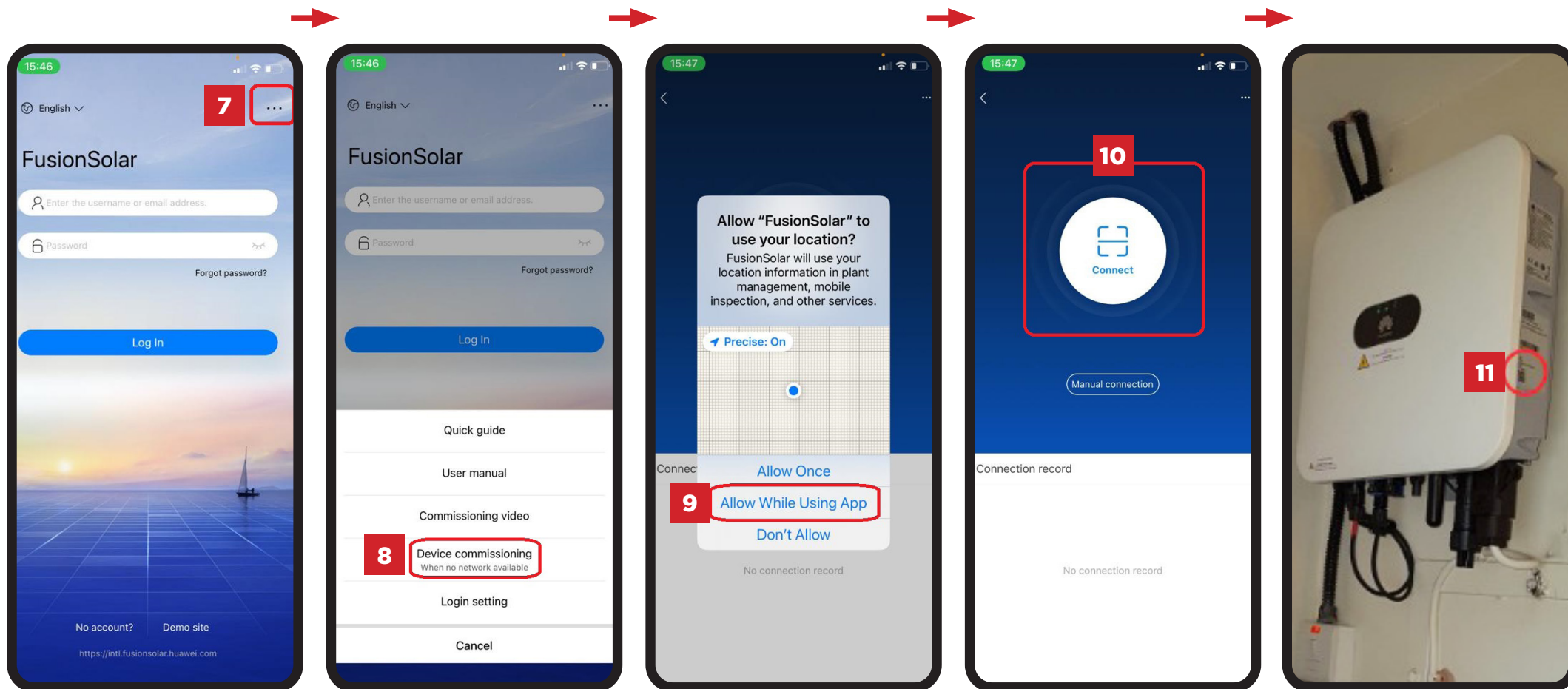
**5** Enter the password **"Changeme"** in the password box, then press join.

**6** Press the **Join** button.

**Check that it has connected successfully.**

# Step 3

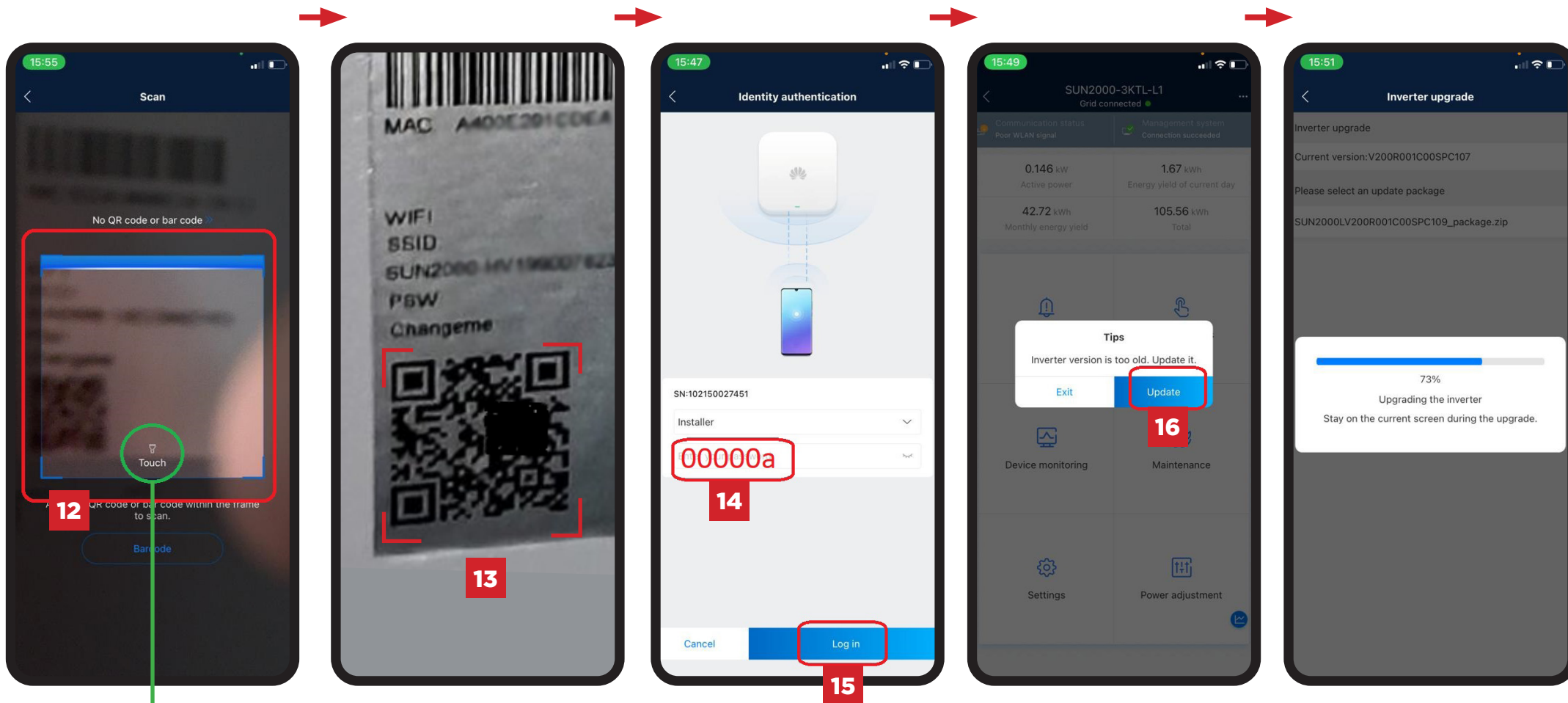
## Login to Inverter



**The QR code is located on the side of your inverter.**

# Step 3 continued

## Login to Inverter



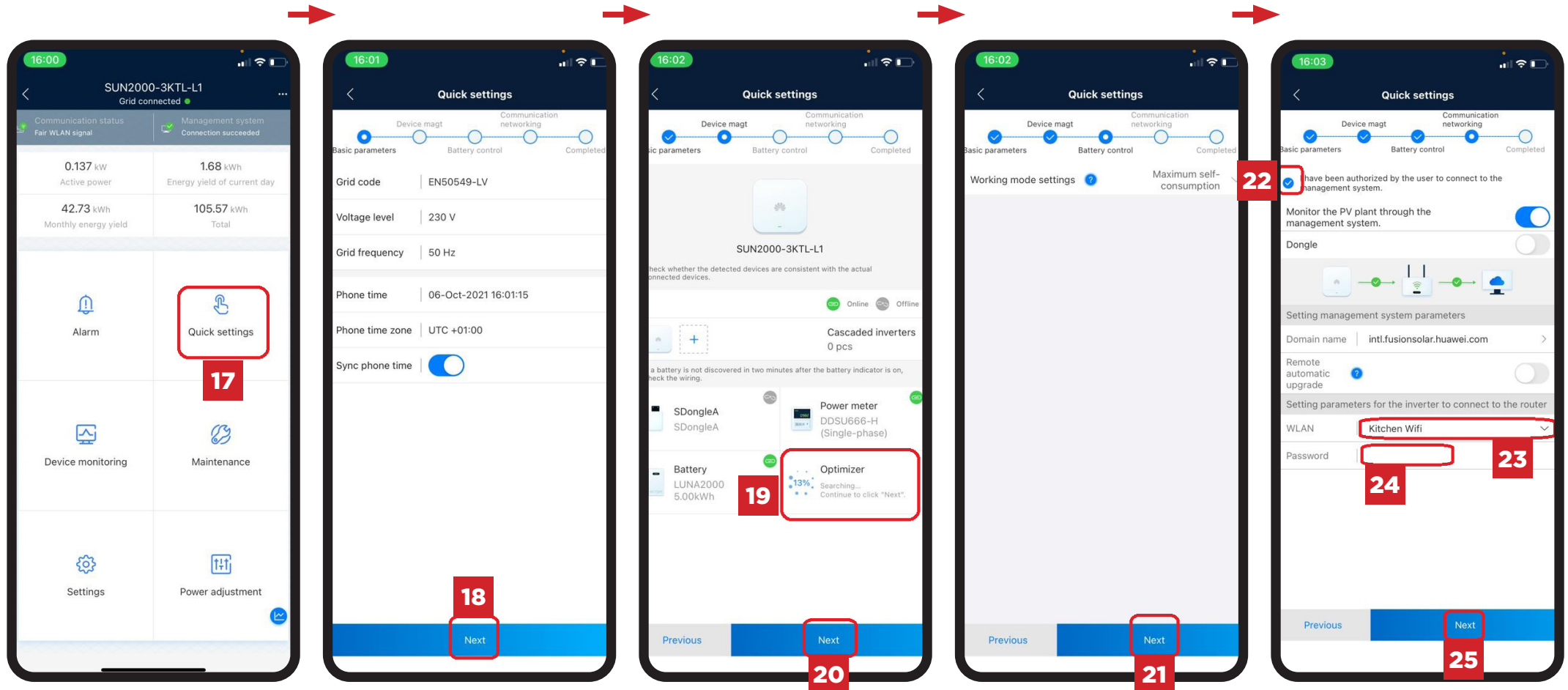
**12.** If in the left, you will need to touch here to turn **ON** the torch.

**13.** This is the QR code. If unable to access left - we may be able to send the pic of the QR code from the install pics.



# Step 4

## Set New Modem/Extender & Password

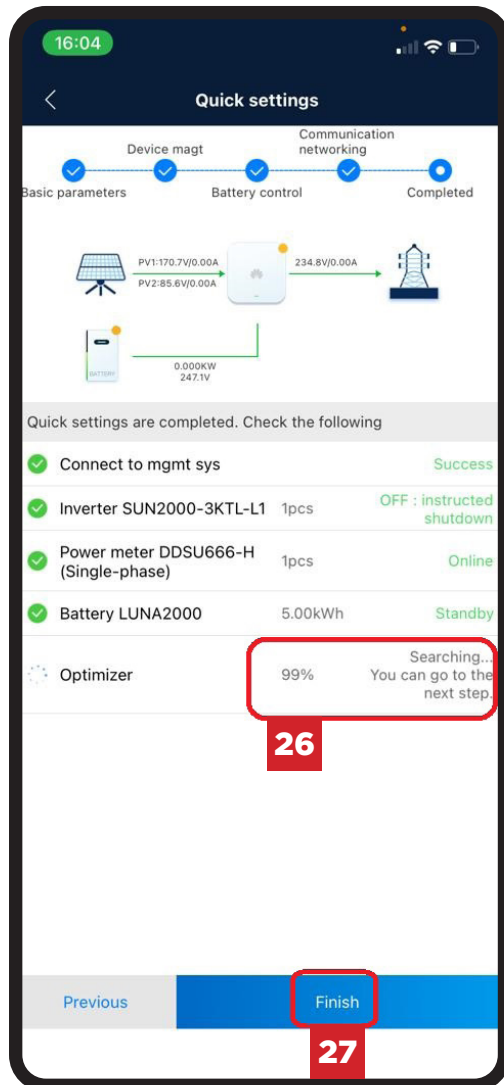


**19. Wait until at 100% before pressing next**

**23. Choose new modem/extender here.**  
**24. Enter the password modem/extender here.**

# Step 5

## Finish



**26. Wait until  
at 100% before  
pressing Finish.**

### Need Help?

Freephone support  
via Huawei Technical  
Assistance Center

Huawei offer 24-hour  
technical support via the  
Freephone European Hotline  
**0080 03 38 88 888**

Or contact Energlaize  
on (01) 9011635 or  
email [info@energlaize.ie](mailto:info@energlaize.ie)